

**R-SERIES**

# REMINGTON VALVE

Severe Service Ball Valves



**R-SERIES**

*IN-LINE REPAIRABILITY – CHANGING THE GAME!*

**CRITICAL SERVICE  
FIELD PROVEN  
ENGINEERED  
SUPPORT  
SERVICE**

*Engineered Solutions for Severe Service Applications*

# WHY CHOOSE REMINGTON?

**REMINGTON VALVE** located in Houston, Texas is a leading manufacturer of Severe Service Ball Valves (SSBV) for the most critical applications in the Refining, Chemical, Petrochemical, Power Generation, Oil & Gas, Mining, Aerospace industries. Decades of Severe Service Ball Valve (SSBV) experience is being utilized in the innovative engineering, manufacturing, cutting edge technology, and field proven designs to help customers like you.

## Why Choose **REMINGTON VALVE**:

- Optimized ball valve design and calculations
- 3D Parametric modeling
- Proprietary coating technology
- Automated lapping process laps both sides of ball
- Vacuum testing to validate Class VI shut-off
- All valves built from forgings – no castings

## R-SERIES Applications:

- High temperature
- High pressure
- Hot reheat spray
- Main turbine drain
- Soot blower header
- Super-heater spray
- Main steam supply
- Boiler feed pump
- Boiler drains
- Feed water drains
- Above and below seat drains
- Attemperator spray block

## R-SERIES (In-line repairability)

Manufactured in Houston, Texas

3 Year Warranty

### SIZE

- ½" – 24" (3 piece design)

### PRESSURE CLASS

- 150# - 4500#

### CENTER SECTION MATERIALS

- A105, F11, F22, F316, F91, F92  
All ASME B16.34 materials available

### END CONNECTIONS

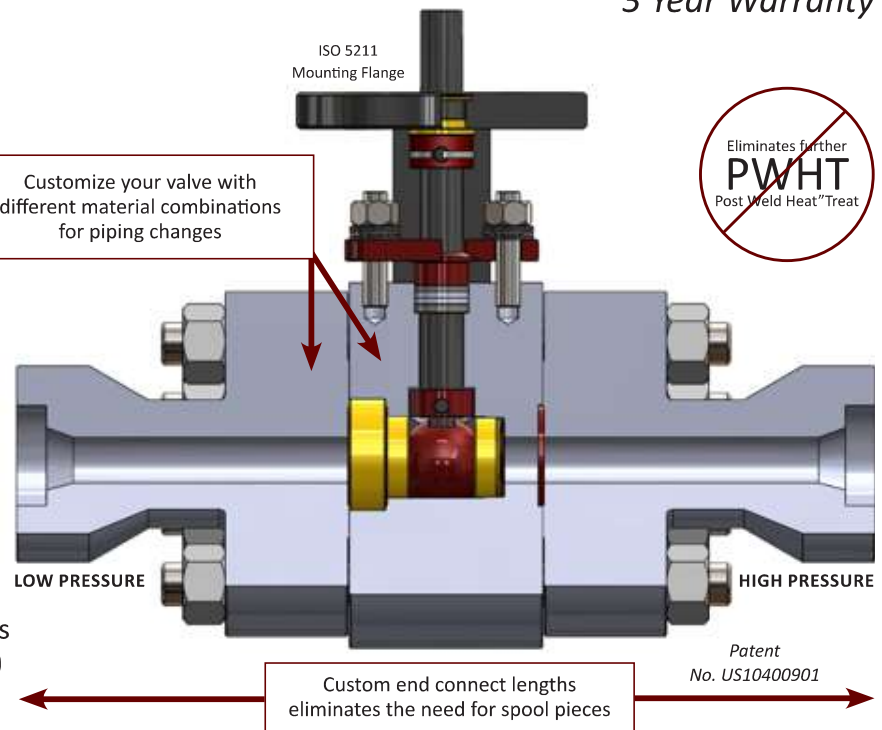
- SW Standard (BW, HUB, FNPT, RFF, RTJ)
- A105, F11, F22, F316, F91, F92  
All ASME B16.34 materials available

### SEALING OPTIONS

- Uni-directional (Standard)
- Bi-directional

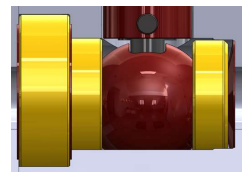
### R-SERIES ADVANTAGES

- Serviceable in-line
- Saves money & time
- Ease of maintenance
- Repairable without cutting the installation welds
- Eliminates further Post Weld Heat Treat (PWHT)



## Features and Benefits

- **Ball & Seats:** Both made from the same material to match thermal expansions
- **Lapping:** Automated lapping process laps both sides of the ball to Class VI shut-off
- **Coating:** Proprietary HVOF and Spray & Fused coatings, with cutting edge technology
- **Stem:** Blowout proof stem with surface hardening to prevent galling
- **Articulating Gland Flange:** Spherical engagement allows for equal load distribution on packing
- **Spring:** Allows for thermal expansion and provides a constant mechanical seal
- **Grafoil Packing:** Premium die-formed with Anti-extrusion rings – Live loaded
- **Body Seals:** Three Proprietary (TF) seals allow the body to be removed without cutting the installation welds
- **Vacuum Testing:** To ensure Class VI shut-off prior to installation
- **ASME B16.34:** All valves built to ASME B16.34 requirements

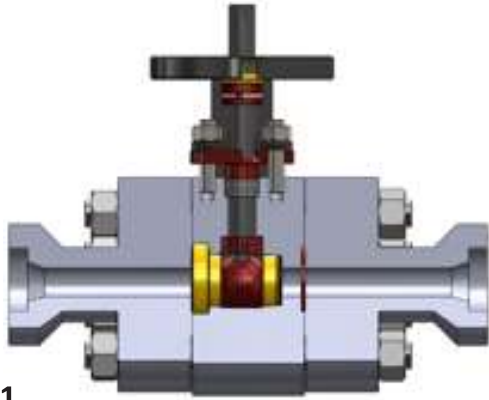


Trim set is vacuum tested to ensure a Class VI shut-off prior to rebuilding the valve

# REPLACEABLE TRIM SET

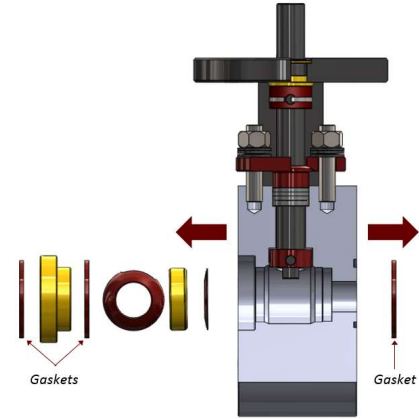
**R-SERIES** (In-line repairability) *Please refer to the IOM manual before installation.*

Patent No. US10400901



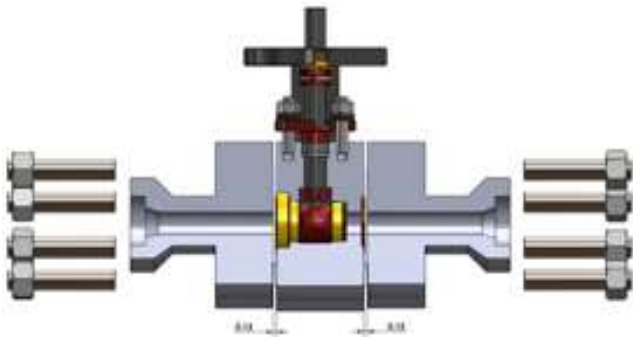
## STEP 1

- No more cutting installation welds.



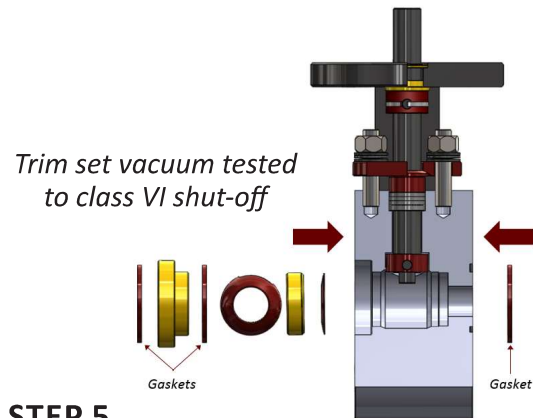
## STEP 4

- Remove trim set and gaskets from body.



## STEP 2

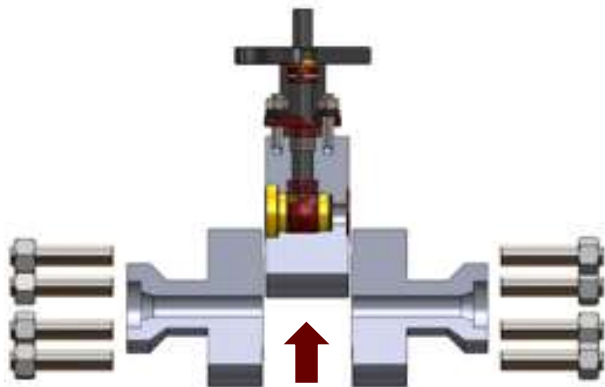
- Remove bolting and spread 1/8" each side.



## STEP 5

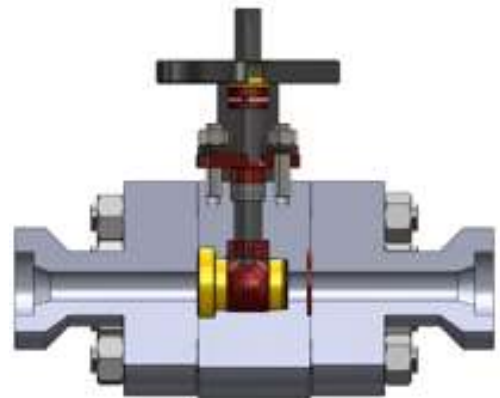
- Install trim set with gaskets in body.

*Trim set vacuum tested to class VI shut-off*



## STEP 3

- Lift center section out of end connections.



## STEP 6

- Install center section and secure bolting.





*Custom designs for the toughest applications*

## **REMINGTON VALVE**

Manufactured in Houston, Texas  
8226 Kerr Street  
Houston, TX 77029

## **CONTACT US:**

[www.RemingtonValve.com](http://www.RemingtonValve.com)  
[sales@RemingtonValve.com](mailto:sales@RemingtonValve.com)  
O: 832.413.4400 F: 281.974.3595